

VACUUM

PRODUCTS OVERVIEW

2023



Increased flexibility, efficiency
and productivity



Suction cups

SHEET METAL / GLASS / PLASTIC HANDLING APPLICATIONS



NEW

VG.MB | VG.MF

- Handling metal sheet with or without oil
- Glass panel handling
- High wear resistance
- Permanent fittings with hexagon



NBR · PU



NEW

VG.U | VG.B | VG.B.SFO | VG.LB | VG.LB.SFO | VG.CF

- Universal and plastic applications
- Suitable for standard application, flat and slightly curved surface
- Excellent grip stability, cleats increase the friction and avoid deformation



NBR · HNBR · Red Silicone · Transparent FDA Silicone

APPLICATIONS FOR PACKAGED AND UNPACKAGED PRODUCTS - SNACKS AND BAGS



VG.FP | VG.BC | VG.SBC

- Ideal for handling packaged flow pack products, packets of cookies and bars
- Robust bellows, soft flexible lip and specific high flow fittings



Red Silicone · Transparent FDA Silicone



VG.BPG | VG.LPG

- Ideal for handling difficult-to-handle items such as bags and flow packs
- The versions without internal insert are ideal for handling unwrapped products such as pralines or biscuits with porous and uneven surfaces



Transparent FDA Silicone



NEW

NEW

VG.BR | VG.LBR | VG.LBO

- Suitable for handling snacks and food bars packed in flowpack
- Ideal for gripping and depositing on the side of the handled object
- Handling of stand-up pouches (Doypack®) containing liquids



Polyurethane 50 Shore



VG.FO

- Ideal for opening bags, vertical and horizontal packaging machines
- Handle thin and sensitive sheets, such as paper and plastic films




Transparent FDA Silicone

WOOD AND POROUS SURFACE APPLICATIONS



VG.BP | VG.GX | VG.IS

- Excellent gripping performance on corrugated and porous surface
- Available with 2.5 and 1.5 bellows (overturn applications)
- Large and flexible lip in the version PUR 30/60 Shore grey/red

 PU 50 Shore green, PUR 30/60 Shore yellow/green, PUR 30/70 Shore yellow/green, PUR 30/60 Shore grey/red

HOT SURFACE AND POLYMER APPLICATIONS



VG.PAAT

- Ideal for objects (made of hot polymers and fibres) with flat or slightly curved surface
- Stainless steel nipple
- Suitable for high working temperatures up to 300 °C


 PTFE

APPLICATIONS FOR UNPACKAGED FOOD PRODUCTS



VG.U | VG.B | VG.FP | VG.LB | VG.BDT

- Suitable for high working temperatures
- Silicone compliant with FDA 21 CFR 177.2600 and regulation (EC) No. 1935/2004
- Detectable suction cups (blue colour): a small amount of metal additive (Fe) is added to the rubber
- Ideal for handling bakery products with seeds

 FDA Silicone · Detectable FDA-compliant silicone

Type of suction cup	Diameter (mm)
VG.U	6, 9, 11, 16, 22, 33, 42, 53
VG.B	6, 9, 11, 16, 22, 33, 42, 53, 77
VG.B.SFO	16, 22, 33, 42, 53
VG.CF	16, 22, 27, 33, 42, 53, 77, 112, 152
VG.LB	6, 9, 11, 16, 22, 33, 42, 53
VG.LB.SFO	16, 22, 33, 42, 53
VG.FP	15, 20, 30, 40
VG.BC	40, 50
VG.SBC	40, 50, 63
VG.MB	32, 42, 52, 63, 83, 103
VG.PAAT	16, 20, 30, 40

Type of suction cup	Diameter (mm)
VG.GX	10, 15, 20, 25, 35, 52, 75
VG.BP	10, 15, 20, 25, 35, 52, 75, 110, 150, 200
VG.IS	20, 25, 35, 45, 55, 70
VG.BR	20x45, 30x55
VG.LBR	20x45, 30x55
VG.LBO	40x90
VG.MF	20, 30, 45, 60, 80, 100, 120
VG.BPG	30, 41, 48, 55
VG.LPG	30, 41, 48
VG.FO	26, 33
VG.BDT	40



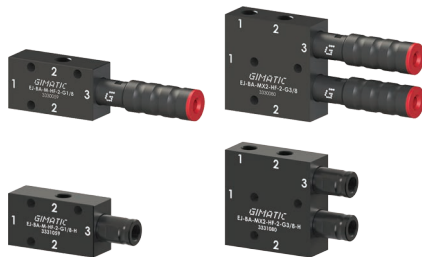
Vacuum pumps

VACUUM PUMPS FOR DECENTRALIZED AND CENTRALIZED APPLICATIONS



SMALL **MEDIUM** **LARGE**

0.18 ÷ 0.29 NI/s **0.57 ÷ 2.7** NI/s **2.6 ÷ 6** NI/s



EJ-BASIC

- Ideal for decentralized applications
- Possibility of integration close to the gripping point, low weight
- Available with two and three stages; EJ-MEDIUM and EJ-LARGE cartridges (EJ-LP, EJ-HF, EJ-HV)

EJ-MEDIUM · EJ-MEDIUMx2
EJ-LARGE with and without
integrated silencer



EJ-LINE

- Ideal for pick & place applications
- Vacuum pump in-line
- Clampable in-line design, to optimize overall dimensions
- Low weight

EJ-SMALL · EJ-MEDIUM
(EJ-LP, EJ-HF, EJ-HV)



EJ-SYS

- Manifold in aluminum, sensing and blow-off port
- Integrated silencer
- Available with two and three stage cartridges (EJ-LP, EJ-HF, EJ-HV)

EJ-SMALL · EJ-MEDIUM with
integrated silencer · EJ-LARGE
with and without integrated silencer

VACUUM PUMPS WITH INTEGRATED BLOWOFF AND QUICK DEVICE



SMALL **MEDIUM** **LARGE**

0.58 NI/s **0.57 ÷ 1.56** NI/s **2.6 ÷ 6** NI/s



EJ-BLOWOFF

- Adjustable integrated blow-off tank
- Keeps the ejector clean and releases the handled product quickly
- Available with or without integrated vacuum switch

EJ-MEDIUM · EJ-MEDIUMx2
EJ-LARGE



EJ-ATM-LINE

- Restores atmospheric pressure inside the gripper for quick product release
- A single 3/2 valve controls the vacuum pump and the ATM release

EJ-SMALLx2 · EJ-MEDIUM
with integrated atmospheric quick
release valve



EJ-BSV-MEDIUM

- Ideal for applications in dusty environments
- Adjustable integrated blow-off tank
- Available with vacuum switch integrated
- Integrated silencer
- Anodised aluminium manifold

EJ-MEDIUM 2 stage (EJ-HF, EJ-HV)
high suction flow rate and low energy
consumption

LIGHTWEIGHT AND MODULAR VACUUM PUMPS



SMALL $0.18 \div 0.29$ NI/s **MEDIUM** $0.57 \div 1.35$ NI/s **LARGE** $2.6 \div 51.2$ NI/s



EJ-SLG

- High suction flow rate/low weight
- Manifold in POM material
- Available with vacuum switch integrated
- Available with two and three stages; EJ-MEDIUM and EJ-LARGE cartridges (EJ-LP, EJ-HF, EJ-HV)

EJ-MLG

- Modular and configurable
- Manifold in POM
- Designed for centralized vacuum system
- Available with 2, 3 or 4 EJ-LARGE cartridges with two or three stages
- Sensing and blow-off connections

EJ-CEN-LARGE

- Ideal for centralized applications
- Modular and configurable from 5 to 16 two-stage EJ-LARGE cartridges (EJ-HF, EJ-HV)
- Compact size and high suction flow rate
- Robust design and low weight (aluminium body and PA12 silencer)
- Can work during suction or blowing (remove silencer)

EJ-MEDIUM · EJ-LARGE with integrated silencer

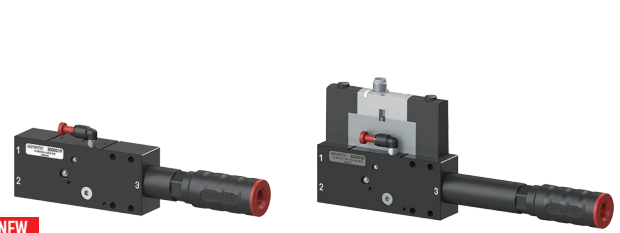
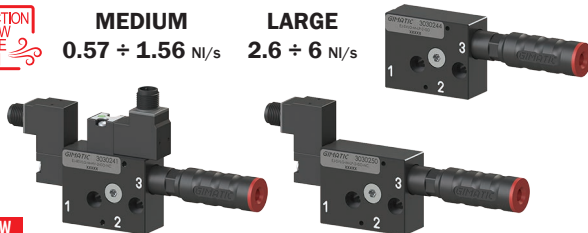
EJ-LARGE 2 or 3 stage

EJ-LARGE 2 stage

ISO VACUUM PUMP



MEDIUM $0.57 \div 1.56$ NI/s **LARGE** $2.6 \div 6$ NI/s



EJ-SVLG-MEDIUM-ISO | EJ-BSVLG-MEDIUM-ISO

- Ideal for decentralized applications
- Excellent ratio between suction flow rate and compressed air consumption
- Available with ON/OFF vacuum valve and integrated manual override control
- POM manifold prepared for mounting ISO 15218 (15 mm) valve of type 3/2, NO or NC, with 1.6 mm diameter opening
- Available with two- and three-stage EJ-MEDIUM cartridges (EJ-LP, EJ-HF, EJ-HV)
- Additional vacuum port for mounting a vacuum switch
- Size: EJ-MEDIUM 2 or 3 stage

EJ-BSVLG-LARGE-ISO

- Ideal for centralized and decentralized applications
- Excellent ratio between suction flow rate and compressed air consumption
- Available with ON/OFF vacuum valve, blow-off, and integrated manual override control
- POM manifold ready for mounting ISO 01 15407-1 3/2 x2 valve
- Available with two- and three-stage EJ-LARGE cartridges (EJ-HF, EJ-HV)
- In-line design for greater dirt tolerance
- Installable in series

EJ-MEDIUM 2 or 3 stage

EJ-LARGE 2 or 3 stage

VACUUM PUMP WITH INTEGRATED SMART FUNCTION



LARGE $2.6 \div 3.2$ NI/s



EJ-XPRO

- Easy to install
- Powerful and reliable
- Simplified maintenance
- Compact dimensions
- Configurations complete with solenoid valves for vacuum generation (NC/NO) and blow-off
- Maximum vacuum level up to -95 kPa
- Suction flow rate up to 192 NI/min
- Integrated blow-off with manual adjustment

BOOSTER - HIGH VACUUM FLOW FOR POROUS SURFACE APPLICATIONS



EJ-BBT BOOSTER

- Ideal for applications where a high suction flow rate is required at low vacuum degrees
- Transport of waste scraps and residual dust

Ø 10, 20, 30 and 40 mm



Multistage cartridges

MULTISTAGE EJECTORS FOR CUSTOM INTEGRATION



EJ-SMALL/MEDIUM/LARGE for custom integration solutions

- EJ-HF: high vacuum flow; max vacuum level: -73 kPa
- EJ-HV: extra vacuum level; max vacuum level: -94 kPa
- EJ-LP: low feed pressure; max vacuum level: -90 kPa



System accessories

VACUUM SWITCHES



VACUUM SWITCHES

- Adjustable electromechanical and pneumatic vacuum switches
- G1/8" and Push-in 6mm; PNP/NPN; pre-set: -30, -50, -70 kPa
- Connection M8x1 3-pin



Vacuum gripping systems

VACUUM GRIPPING SYSTEMS WITH FOAM



NEW

GFS-060 | GFS-120

- Available in different sizes to meet the requirements of many applications
- Modular and versatile solution, available with calibrated holes and self-closing valves
- Typical applications: palletization and handling in the packaging, sheet metal, glass and wood industries

VACUUM GRIPPING SYSTEMS WITH SUCTION CUPS

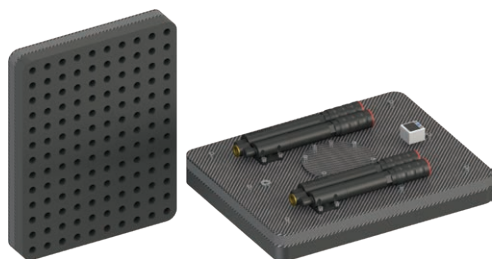


NEW

GFS-120-SC

- Available in different sizes to meet the requirements of many applications
- The VG.IS polyurethane suction cups ensure high wear resistance and adaptability to uneven surfaces
- Typical applications: palletization and handling in the packaging, sheet metal, glass and wood industries

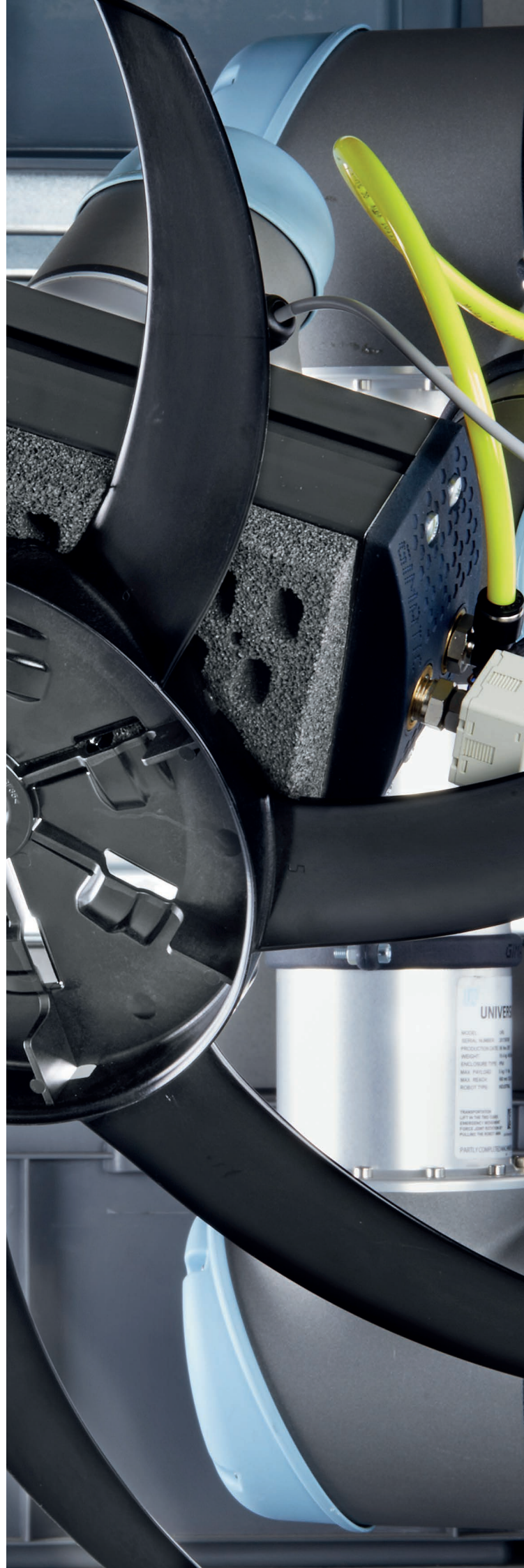
VACUUM GRIPPING SYSTEMS WITH FOAM



NEW

FCG

- Ideal mainly for palletising cardboard boxes, interlayers and pallets
- Power&light version with light carbon body and high suction flow rate





Via Enzo Ferrari, 2/4
25030 Roncadelle (BS) ITALY

tel. +39 030 2584655
fax +39 030 2583886

info@gimatic.com
www.gimatic.com



Sales Network